



shantima

URBAN FOLK

shāntima

Authentic Linen Clothes For Men And Women

SHĀNTIMA is a small clothing design studio located in southern Israel.

Our goal is to be able to show the harmony between external and internal beauty in every person who come to us.

So we create high-quality linen clothing that truly reflects the individuality of its owner.

In our design, we strive for simplicity and comfort and prefer direct and trapezoidal silhouettes, laconic cut and layering.

We almost do not use fasteners, but tapes, ties and elastic bands.

We work with 100% linen, because we believe that it is a special material.

Eco-friendly and fully biodegradable linen has natural antiseptic and antibacterial properties. It doesn't create static and protects against ultraviolet radiation. Also it allows the body to breathe! That's why clothes made from linen fabrics are so comfortable to be used in the heat.

Finally, linen is very wear-resistant and with time it only gets better.

The sustainability of the production is also very important for us.

We buy linen in reliable sources, knowing the whole process of fabric manufacturing. Also we use the work of local specialists. All our clothes are hand made in Israel.

Our collection "URBAN FOLK", mostly created of mediumweight linen - soft and breathable, is relevant for wearing all year round, especially in a hot climate.

Collection "URBAN FOLK" was inspired by a mix of European and Indian cultures, blending the timeless beauty of linen with the rich traditions of both regions.

We use traditional European tailoring techniques to create classic silhouettes, but we also incorporate Indian style adds a touch of exotic flair.





Tunic NERO

Long tunic with side slits

Price: **\$185 / ILS650**

SKU: **D002**

Fabric: 100% Linen
Light-weight (125g/m2)

URBAN FOLK





Jacket TIX

Short Jacket with long sleeves

Price: **\$185 / ILS650**

SKU: **T006**

Fabric: 100% Linen
Medium-weight (185g/m2)

URBAN FOLK



Jumpsuit TALISE

Harem jumpsuit with wrap top

Price: **\$269 / ILS940**

SKU: **P001**

Fabric: 100% Linen
Medium-weight (185g/m2)



URBAN FOLK





Dress DOR

Oversized Maxi Dress

Price: **\$195 / ILS680**

SKU: **D005D**

Fabric: 100% Linen
Medium-weight (185g/m2)

URBAN FOLK





Tunic SANGA

Loose tunic with side slits

Price: **\$155 / ILS540**

SKU: **D005T**

Fabric: 100% Linen
Medium-weight (185g/m2)

URBAN FOLK





Dress Linas

Apron dress with long ties

Price: **\$185 / ILS650**

SKU: **D015**

Fabric: 100% Linen
Medium-weight (185g/m2)

URBAN FOLK





Dress NIKA

Long Dress with $\frac{3}{4}$ sleeves

Price: **\$209 / ILS730**

SKU: **D013**

Fabric: 100% Linen

Medium-weight (185g/m²)

Underdress OLA

Price: **\$159 / ILS550**

SKU: **D012**

Fabric: 100% Linen

Light-weight (125g/m²)





Kaftan URSA

Open front jacket with half sleeves

Price: **\$225 / ILS780**

SKU: **D014**

Fabric: 100% Linen
Medium-weight (185g/m2)

URBAN FOLK





Top FRIDA

Asymmetric top with short front and long back

Price: **\$157 / ILS550**

SKU: **D009**

Fabric: 100% Linen
Medium-weight (185g/m2)

URBAN FOLK





Dress OLA

Long tank dress with pockets

Price: **\$175 / ILS610**

SKU: **D012**

Fabric: 100% Linen
Medium-weight (185g/m2)

URBAN FOLK



Kimono ADAME

Wrap jacket with sleeves

Price: **\$245 / ILS850**

SKU: **D017**

Fabric: 100% Linen
Medium-weight (185g/m2)



URBAN FOLK



Tunic YUCCA

Asymmetric tunic dress

Price: **\$227 / ILS795**

SKU: **D020**

Fabric: 100% Linen
Light-weight (125g/m2)

URBAN FOLK





Pants RANI

High waisted palazzo pants

Price: **\$215 / ILS750**

SKU: **P003**

Tank Top MAHA

Price: **\$110 / ILS385**

SKU: **T005**

Fabric: 100% Linen

Medium-weight (185g/m2)





Jacket TOLLO

Medium length jacket

Price: **\$195 / ILS680**

SKU: **D011**

Fabric: 100% Linen
Medium-weight (185g/m²)
Light-weight (125g/m²)

URBAN FOLK





Top MIA

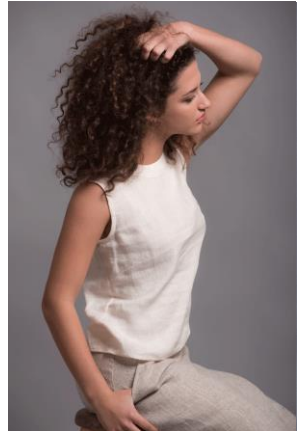
Open back tank top

Price: **\$140 / ILS490**

SKU: **T001**

Fabric: 100% Linen
Medium-weight (185g/m²)

URBAN FOLK





Top SOVA

Loose top with long sleeves

Price: **\$135 / ILS470**

SKU: **T008**

Pants YANK

Cropped pant without pockets

Price: **\$120 / ILS420**

SKU: **P005**

Fabric: 100% Linen

Medium-weight (185g/m²)





Skirt AIRA

Trapeze maxi skirt

Price: \$195 / ILS680

SKU: X001

Fabric: 100% Linen
Medium-weight (185g/m2)

URBAN FOLK





Jacket HENK

Long open front jacket

Price: **\$275 / ILS960**

SKU: **D003**

Fabric: 100% Linen
Medium-weight (185g/m2)

URBAN FOLK





Vest GAYA

Long vest with side slits

Price: **\$209 / ILS730**

SKU: **D006**

Dress TAYA

Halter Tie Neck Dress

Price: **\$190 / ILS665**

SKU: **D018**

Fabric: 100% Linen

Medium-weight (185g/m²)



Dress ALICE

Bias cut sleeveless dress

Price: **\$205 / ILS720**

SKU: **D001**

Fabric: 100% Linen
Medium-weight (185g/m2)

URBAN FOLK





Tunic MIRA

Loose tunic with open back

Price: **\$160 / ILS560**

SKU: **D004**

Pants JIVA

Skirt-pants with elastic waist

Price: **\$165/ ILS570**

SKU: **M002**

Fabric: 100% Linen

Mediumweight (185g/m2)





Dress EVA

Maxi Dress with open back

Price: **\$269 / ILS940**

SKU: **D019**

Fabric: 100% Linen
Medium-weight (185g/m2)

URBAN FOLK





Top HAG

Double layered top

Price: **\$209 / ILS730**

SKU: **T007**

Fabric: 100% Linen
Light-weight (125g/m2)

URBAN FOLK





Pants BORA

Straight wide-leg pants

Price: **\$155 / ILS550**

SKU: **P002**

Fabric: 100% Linen
Medium-weight (185g/m2)

URBAN FOLK





Skirt INDI

Maxi skirt with side pockets

Price: **\$209 / ILS730**

SKU: **X002**

Fabric: 100% Linen
Medium-weight (185g/m2)

URBAN FOLK



Top DANCE

Crop wrap top

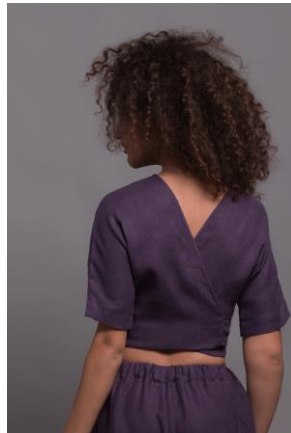
Price: **\$150 / ILS525**

SKU: **T004**

Fabric: 100% Linen
Medium-weight (185g/m2)



URBAN FOLK





Pants NOAH

Harem pants with elastic waist and cuffs - unisex

Price: **\$165 / ILS570**

SKU: **M001**

Fabric: 100% Linen
Medium-weight (185g/m2)

URBAN FOLK





Dress UNA

Loose A-line midi dress

Price: **\$169 / ILS590**

SKU: **D007**

Fabric: 100% Linen
Light-weight (125g/m2)
Medium-weight (185g/m2)

URBAN FOLK





Pants ALTO

Loose tapered pants

Price: **\$185 / ILS650**

SKU: **P004**

Fabric: 100% Linen
Medium-weight (185g/m²)

URBAN FOLK





Tunic AYA

Tunic dress with slits

Price: **\$185 / ILS650**

SKU: **D008**

Fabric: 100% Linen
Medium-weight (185g/m²)
Light-weight (125g/m²)

URBAN FOLK





Tunic KENI

Midi tunic with side slits

Price: **\$170 / ILS595**

SKU: **D010**

Crop Top DION

Price: **\$95 / ILS330**

SKU: **M004**

Fabric: 100% Linen

Medium-weight (185g/m²)





Obi belt

Wide belt in Japanese style

Price: **\$83 / ILS290**

SKU: **B001**

Fabric: 100% Linen
Medium-weight (185g/m2)

URBAN FOLK





Djellaba ZIV

Long Shirt with side slits

Price: **\$207 / ILS725**

SKU: **T003L**

Top ZIV

Shirt with short sleeves

Price: **\$155 / ILS540**

SKU: **T003**

Fabric: 100% Linen

Mediumweight (185g/m2)





Pants NOAH

Harem pants with elastic waist and cuffs - unisex

Price: **\$165 / ILS570**

SKU: **M001**

Fabric: 100% Linen
Medium-weight (185g/m2)

URBAN FOLK





Shawl wrap

Wide and long scarf

Price: **\$89 / ILS310**

SKU: **A002**

Fabric: 100% Linen
Medium-weight (185g/m²)
Light-weight (125g/m²)

URBAN FOLK

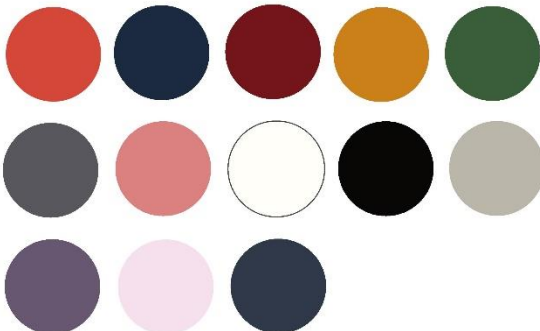


Fabric: 100% Linen
Medium-weight (185g/m2)



- Terracotta
- Dark Navy Blue
- Burgundy
- Mauve Lilac
- Gray Green
- Pine Green
- Dark Brown
- Antique White
- Black
- Natural Flax
- Gris Mauve
- Mustard
- Charcoal Gray
- Rain Drop
- Midnight Blue
- Seaweed Green
- Riverside Blue
- Turquoise
- Deep Aquamarine
- Ice Blue
- Moss Green
- Mushroom Brown
- Dried Herb Green
- Light Gray
- Wisteria Lilac
- Ripe Fig
- Mauve Lilac
- Royal Purple
- Ginger Brown

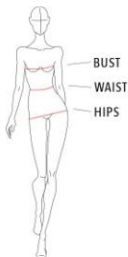
Fabric: 100% Linen
Light-weight (125g/m2)



- Terracotta
- Midnight Blue
- Burgundy
- Turmeric
- Grass Green
- Medium Gray
- Coral
- Antique White
- Black
- Natural Flax
- Gris Mauve
- Light Pink
- Charcoal Gray

WOMEN'S SIZES GUIDE

JAPAN	5	7	9	11	13	15	17	19	21	23	25	27
IT	38	40	42	44	46	48	50	52	54	56	58	60
UK	6	8	10	12	14	16	16/18	18	18/20	20	22	24
RUS	40	42	44	46	48	50	52	54	56	58	60	62
EURO	34	36	38	40	42	44	46	48	48/50	50	52	54
US	2	4	6	8	10	12	14	16	18	20	22	24
SHANTIMA	XS	S	S/M	M	M/L	L	L/XL	XL	XL/XXL	XXL	XXL/3XL	3XL
BUST (CM)	80	84	88	92	96	100	104	108	112	116	120	124
WAIST (CM)	62	66	70	74	78	82	86	90	94	98	102	106
HIPS (CM)	86	92	96	100	104	108	112	116	120	124	128	132
BUST (INCHES)	31.5	33	34.5	36	38	39.5	41	42.5	44	45.5	48	49
WAIST (INCHES)	24.5	26	27.5	29	30.5	32	34	35.5	37	38.5	40	41.5
HIPS (INCHES)	33.5	36	37.5	39.5	41	42.5	44	45.5	47	49	50.5	52



IMPORTANT NOTICES

THE MEASUREMENTS IN THE GUIDE ARE BASED ON MEASUREMENTS TAKEN DIRECTLY FROM THE BODY, NOT THE GARMENT.

GARMENTS ARE DESIGNED FOR 164-170CM HEIGHT (5'5"-5'7"). PLEASE LEAVE A NOTE WITH YOUR ORDER IF YOUR HEIGHT DOES NOT FALL IN THIS RANGE.

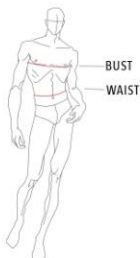
MEASURE DIRECTLY ON THE BODY. KEEP THE MEASURING TAPE HORIZONTAL.

IF YOUR MEASUREMENTS FALL BETWEEN TWO SIZES, ORDER THE SMALLER SIZE FOR A TIGHTER FIT OR THE BIGGER SIZE FOR A LOOSER FIT.



MEN'S SIZES GUIDE

JAPAN	M	M	L	L	LL	LL	LLL	LLL	4L	4L	5L	5L
IT	44	46	48	50	52	54	56	58	60	62	64	66
UK	34	36	38	40	40/42	42	44	46	46/48	48	50	52
RUS	44	46	48	50	52	54	56	58	60	62	64	66
EURO	38	40	42	44	46	48	50	52	54	56	58	60
US	XS	S	S	M	M	L	L	XL	XL	XL	2XL	2XL
SHANTIMA	XS	S	S/M	M	M/L	L	L/XL	XL	XL/XXL	XXL	XXL/3XL	3XL
BUST (CM)	88	92	96	100	104	108	112	116	120	124	128	132
WAIST (CM)	76	80	84	88	92	96	100	104	108	112	116	120
BUST (INCHES)	34.5	36	38	39.5	41	42.5	44	45.5	47	49	50.5	52
WAIST (INCHES)	30	31.5	33	34.5	36	38	39.5	41	42.5	44	45.5	47



IMPORTANT NOTICES

THE MEASUREMENTS IN THE GUIDE ARE BASED ON MEASUREMENTS TAKEN DIRECTLY FROM THE BODY, NOT THE GARMENT.

GARMENTS ARE DESIGNED FOR 176-182CM HEIGHT (5'9"-6'). PLEASE LEAVE A NOTE WITH YOUR ORDER IF YOUR HEIGHT DOES NOT FALL IN THIS RANGE.

MEASURE DIRECTLY ON THE BODY. KEEP THE MEASURING TAPE HORIZONTAL.

IF YOUR MEASUREMENTS FALL BETWEEN TWO SIZES, ORDER THE SMALLER SIZE FOR A TIGHTER FIT OR THE BIGGER SIZE FOR A LOOSER FIT.



Contact us with any questions and suggestions, individual and wholesale inquiries, or just to say hello. We'd love to hear your feedback!

With love,
Alina Zilberman & Shantima team

E-mail: hi@shantima.com

Tel: +972 544891872

Shantima – Authentic Linen Clothes
Aharonson, 45
Beer Sheva
8451400
Israel

WWW.SHANTIMA.COM



URBAN FOLK



WWW.SHANTIMA.COM